



Surely, there is much more to life than you can ever imagine.

Why set limits to what you can and can't have at home? When you can realistically have much, much more than your mind can conceive, expect or ask for at Vertu Resort. Having the distinction of being the first residential project in Aspen Vision City, Vertu Resort is an architectural masterpiece that is set to adorn the Batu Kawan skyline.

生活无极限

何须在家里限制“能”与“不能”? 在 Vertu Resort, 您可以拥有超出您所期望的生活。Vertu Resort 是 Aspen Vision City 的第一个住宅项目, 其建筑杰作旨在为峇都加湾的天际线添上一抹色彩。



“Drawing inspiration from exotic resorts around the world, Vertu Resort is designed with idyllic luxuries and extravagant facilities.”

Vertu Resort consists of five stunning towers that are ingeniously designed into two clusters to not only stand apart as an iconic landmark, but to also give residents exclusive privacy. The splendour of Vertu Resort can truly be experienced through its extravagant facilities, state-of-the-art security, sustainability features, exquisite layouts and panoramic vistas. This is an exclusive invitation for you to escape the conventional and traditional, and wholly embrace a captivating lifestyle of living for more.

“Vertu Resort 度假式公寓从世界各地的异国风情度假村汲取灵感，其公寓设施的设计结合了休闲与奢华的概念。”

Vertu Resort 涵盖了五座精美设计的建筑大楼，此杰作不仅是标志性地标，而且还为其居民提供了专属的隐私。Vertu Resort 的辉煌之处可以经由其奢华的公寓设施，最先进的保安措施，可持续性发展的功能，精美的单位格局甚至宽阔的景观，带给您另一层面感官体验的享受。我们独家盛情邀请您参与我们一起拥抱精彩的生活。

PROJECT HIGHLIGHTS



Strategic Location

地理位置优越



Walking Distance to IKEA Batu Kawan and UOW Malaysia KDU Penang University College

毗邻峇都交湾宜家商场及马来西亚伍伦贡伯乐檳城大学学院



Versatile Layouts

现代化和亲商的内部设计



200,000 sq. ft. Facilities Floor

200,000 平方尺设施楼层



Longest Residential Swimming Pool in Southeast Asia

东南亚最长的游泳池



Advanced (4-Tier) Security System

高级保安系统 (4层)



On-Demand Services

附加式服务



GBI Silver Certification

GBI 银牌认证

Located centrally in Aspen Vision City (AVC), the northern region's largest intelligently integrated city, Vertu Resort gives you the advantage of being just minutes away from all kinds of amenities and hotspots that are highly sought after by people from far and near. Masterplanned with a comprehensive network of infrastructure, AVC comprises a myriad of commercial and residential projects that complement one another to build a self-sustaining community that will not only flourish economically, but also elevate the standard of living exponentially.

Vertu Resort 位于北马区域最大的综合智能城市 Aspen Vision City (AVC) 的中心点，所有的便利设施与人们追捧的热门点都仅数分钟之遥，让您享尽无穷的生活便利。AVC 总体大蓝图规划涵盖了完整的基础架构网络，其中的发展结构包括了无数的商业和住宅项目，旨在建立一个可持续发展的社区，借以促使蓬勃的经济成长，提高人们的生活水平。

LEGEND

- 1 Link to Penang Second Bridge
前往槟城第二大桥
- 2 IKEA Batu Kawan
IKEA 宜家商场
- 3 Klippa Shopping Centre
Klippa购物中心
- 4 Vivo Executive Apartment
Vivo行政公寓
- 5 Versa
- 6 Commercial Development
商业发展
- 7 Klippa Drive-Thru
Klippa 得来速餐厅
- 8 Starbucks Drive-Thru And
CALTEX Petrol Station
星巴克得来速咖啡馆及油站
- 9 BP Healthcare Centre
BP 医疗中心
- 10 25-acre Central Park
25英亩的中央绿化公园
- 11 Viluxe
Viluxe 优质双层排屋
- 12 Vervea Shop Offices
Vervea商业办公室
- 13 Vervea Trade & Exhibition Centre (VTEC)
VTEC贸易和展览中心
- 14 Columbia Asia Hospital - Batu Kawan
Columbia Asia医院 - 峇都交湾
- 15 CALTEX Petrol Station & F&B Drive-Thru
CALTEX加油站及得来速餐厅
- 16 Aspen Vision City Sales Gallery
Aspen Vision City 销售廊



Well-positioned to bring you closer to all that matters

AVC's vantage location at the landing point of the Second Penang Bridge is easily accessible via the North-South Expressway and other major roads.

优越的地理位置让您更贴近一切

坐落于槟城第二大桥降落点，并连接其他主要道路的优越位置。

500 metres walk to IKEA Batu Kawan and Klippa Shopping Centre.
步行 500 米即可到达宜家峇都加湾和Klippa购物中心。

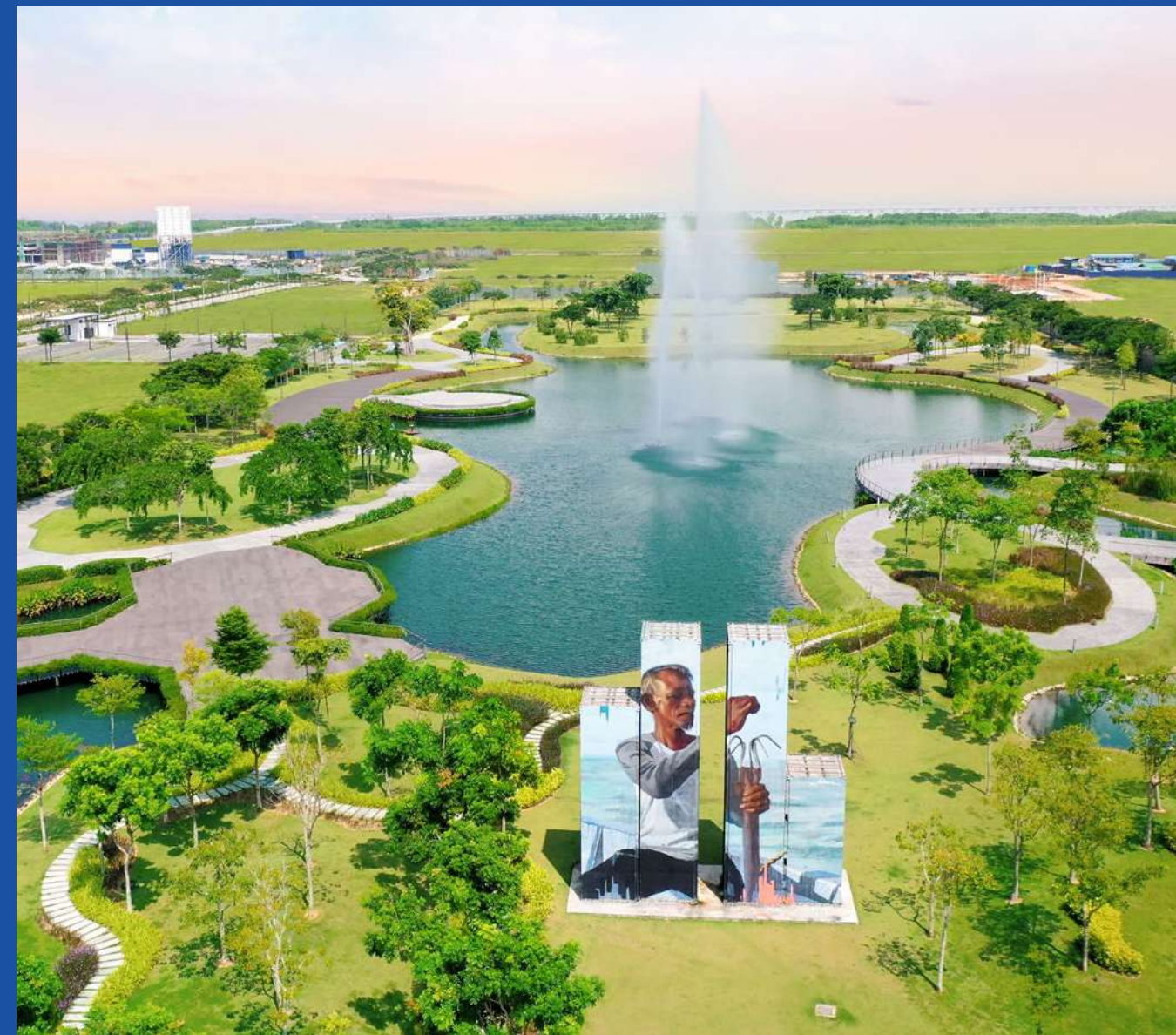
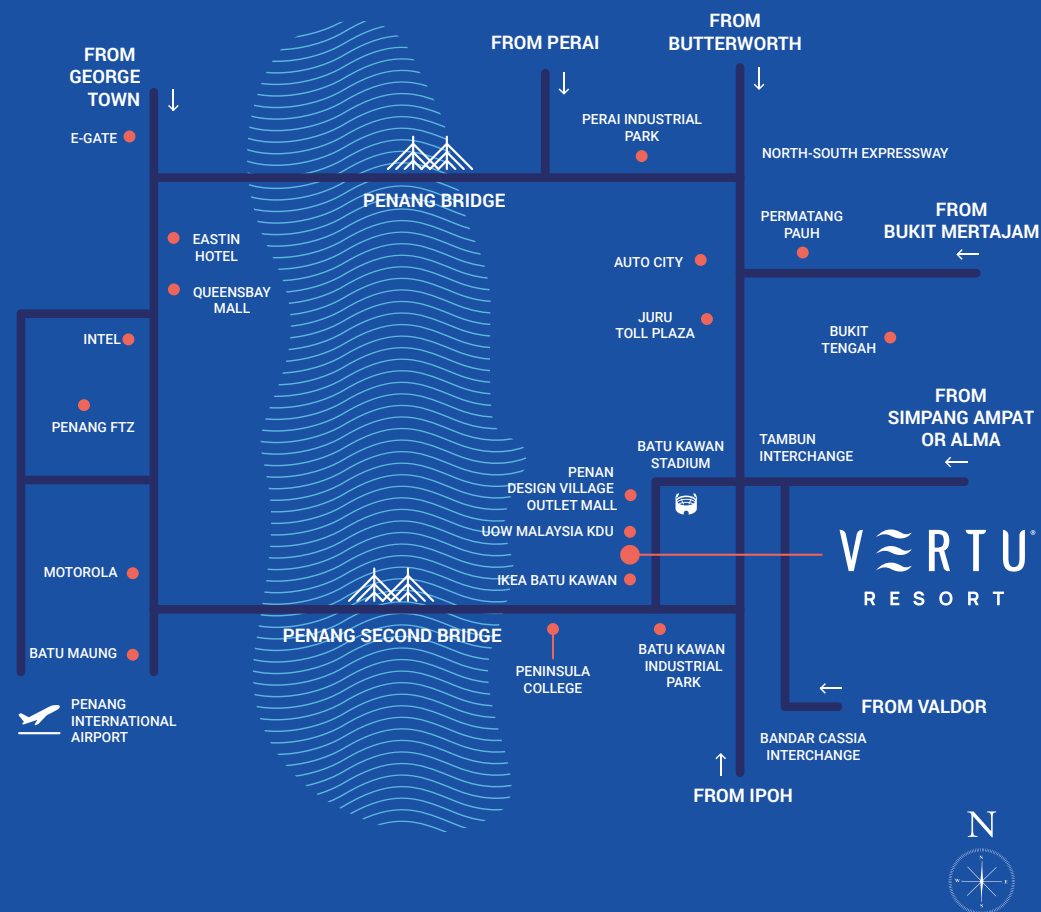
Less then 300 metres walking distance to Vervea, Columbia Asia Hospital - Batu Kawan, and 25-acre Central Park.
步行 300 米即可到达 Vervea 商业区, Columbia Asia 医院 – 峇都交湾和 25 英亩的中央绿化公园。

Approximately 5km to public amenities, including government offices, post office, banks, schools and universities.

距公共设施约 5 公里, 包括政府机构、邮局、银行、学校和大学。

PENANG ISLAND

MAINLAND





A Stunning Metropolis Rises, With You in the Middle of It All.

新晋卫星市的诞生

Now there are more reasons to stay home for a perfect getaway.

Living at Vertu Resort is like being on an extended vacation in an exotic resort. It is lavishly designed with extravagant facilities and a variety of activity zones that promise unending fun and pleasure for everyone in the family. Take a leisurely dip in the azure waters of our 152-metre infinity residential pools, one of the longest infinity residential pools in Southeast Asia. Or if you prefer excitement over relaxation, pursue the activity of your choice at the facilities floor that spans a whopping 200,000 sq. ft. One thing that you will never run out of is the endless options for leisure, recreation, culinary exploration and discovery.

您的家园，就是最完美的

生活于 Vertu Resort 就像在异国情调的度假胜地度过一个完美长假。它独特的建筑设计，配有奢华的公寓设施和各种活动区，务必给每个家庭带来无尽的乐趣。拥有全东南亚最长的无边际泳池之一，悠闲畅游于泳池中无疑是最佳享受，若您嗜好其他的休闲活动，其总占地 200,000 平方尺的设施楼层让您休闲娱乐将享之不尽。

Ground Floor Facilities

底楼设施



- | | | | | | | | |
|--------------------|-------|------------------|-------|--|---------------|-------------------------------|----------|
| 1 Surau (Male) | 男士祈祷室 | 7 Recycling Room | 资源回收室 | 13 Cycling Track | 自行车径 | 19 DIY Tools Room | DIY 工具室 |
| 2 Surau (Female) | 女士祈祷室 | 8 Security Room | 保安室 | 14 Bicycle Parking | 自行车停放处 | 20 Kindergarten | 幼儿园 |
| 3 Lift Lobby | 电梯大堂 | 9 Loading Area | 装卸区 | 15 Convenience Store | 便利商店 | Multi Egress & Ingress Points | 多个出口和入口点 |
| 4 Mail Box | 邮箱 | 10 Guard House | 保安亭 | 16 Smart Parcel Locker & Vending Machine | 智能包裹寄放室和自助售卖机 | | |
| 5 Lobby Lounge | 休息厅 | 11 Washroom | 卫生间 | 17 Launderette | 自助洗衣间 | | |
| 6 Drop Off Porch | 接送区 | 12 Car Wash | 汽车清洗区 | 18 Landscape Reflective Pool | 倒映池 | | |

Vertu Infinite Leisure (Level 8)

8楼设施



- | | | | | | |
|-------------------------------|---------|------------------------------|--------------|---|----------------|
| 1 Lift Lobby | 电梯大堂 | 20 Outdoor Games Lawn | 户外游戏草坪区 | 39 Lagoon Pool | 湖湾泳池 |
| 2 Guest Suite | 宾客套房 | 21 Outdoor Gym | 户外健身区 | 40 Pool Lounge | 泳池休息台 |
| 3 Tranquil Garden | 碧绿花园 | 22 Spa & Wellness Centre | 水疗养生馆 | 41 Yoga Deck | 瑜伽甲板 |
| 4 Water Feature | 喷泉水景 | 23 Washroom | 卫生间 | 42 Pool Bar | 池畔酒吧 |
| 5 Herb Garden | 药草园 | 24 Aerobics & Yoga Room | 健美操及瑜伽室 | 43 Kids Adventure Playground | 儿童探险游乐区 |
| 6 Tuition Room | 补习室 | 25 Reflexology Corner | 脚底按摩区 | 44 Washroom, Sauna, Steam & Changing Room | 卫生间, 桑拿蒸汽房和更衣室 |
| 7 Study Room | 学习室 | 26 Meditation Lawn | 禅修草坪区 | 45 Hanging Net & Climbing Playroom | 编织吊网和攀爬游戏室 |
| 8 Reading Deck | 阅读区 | 27 Sunset Deck (Above Gym) | 日光甲板 (健身房顶部) | 46 Hanging Swing Garden | 秋千花园 |
| 9 Shaded Garden | 遮阴花园 | 28 Indoor Gym | 室内健身房 | 47 Kids Classic Playground | 儿童游乐园 |
| 10 Library & Reading Lounge | 图书馆及阅读室 | 29 Tree Boulevard | 树荫走道 | 48 Toddler Playground | 幼儿游乐园 |
| 11 BBQ Lawn | 烧烤草坪区 | 30 Water Swing | 水上秋千 | 49 Kids Roll & Tumble Play Area | 儿童爬滚游戏区 |
| 12 Forest Staircase Court | 阶梯林园 | 31 Chill Out Pool | 游乐池 | 50 Sandbox Playground | 沙盘游乐区 |
| 13 Smoking Room | 吸烟休息室 | 32 Fun & Aqua Play Pool | 水上玩乐区 | 51 Sculpture Staircase Courtyard | 雕塑阶梯林园 |
| 14 Chill Out Lounge | 休息室 | 33 Sun Lounge | 日光休息区 | 52 Picnic Lawn with Cabana | 野餐草坪和凉亭 |
| 15 Games Room | 游戏室 | 34 Dining Pavilion | 餐饮亭 | 53 Music Room | 音乐室 |
| 16 Table Tennis | 乒乓球区 | 35 Event Pavilion | 活动亭 | 54 Karaoke & Virtual Games Room | 卡拉OK及虚拟游戏室 |
| 17 Management Lounge & Office | 管理办公室 | 36 Jacuzzi | 按摩浴缸 | 55 Alfresco Area | 露天休闲区 |
| 18 Outdoor Shower | 户外淋浴区 | 37 Aqua Gym | 水上健身区 | 56 Cocktail & Event Deck | 活动和酒会区 |
| 19 Hammock Garden | 吊床花园 | 38 Lap Pool | 泳池 | 57 Cigar Lounge | 雪茄室 |

Vertu Sky Splendour (Tower B, Level 34)

顶楼设施



- | | | | | | |
|-------------------|--------|-------------------|------|------------------|-------|
| ① Urban Farming | 空中绿色园艺 | ③ Hang Out Garden | 聚会园林 | ⑤ Kids Playroom | 儿童游戏室 |
| ② Family BBQ Area | 烧烤区 | ④ Washroom | 卫生间 | ⑥ Social Kitchen | 社交厨房 |
| | | | | ⑦ Lift Lobby | 电梯大堂 |



With 200,000 sq. ft. of dedicated space for relaxation, entertainment and play, life at Vertu Resort is an unending vacation and unmatched fun.

200,000平方尺的休闲娱乐空间, 让您在Vertu Resort的生活等同于在无休止的欢乐假期中。

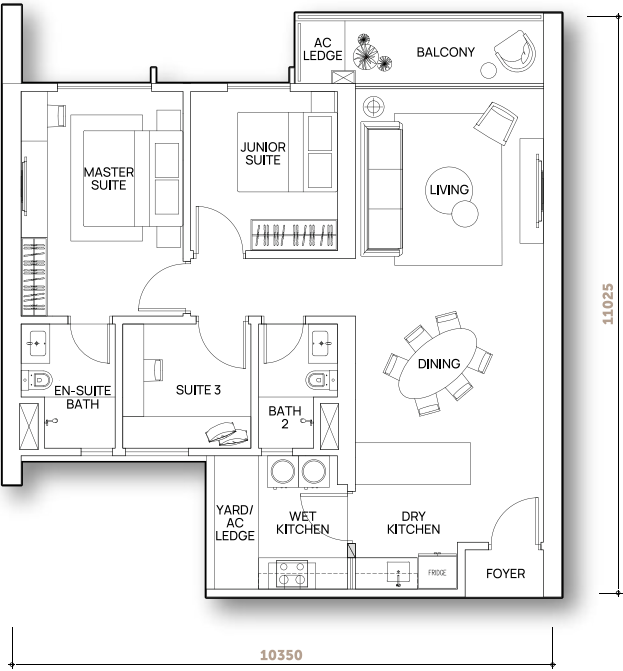
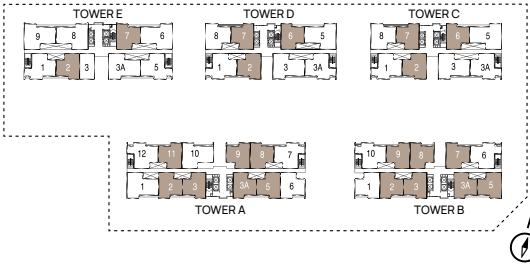
Floor Plans

Type A

户型 A

1,030 sq. ft.
3 Bedrooms

1,030 平方尺
3 房

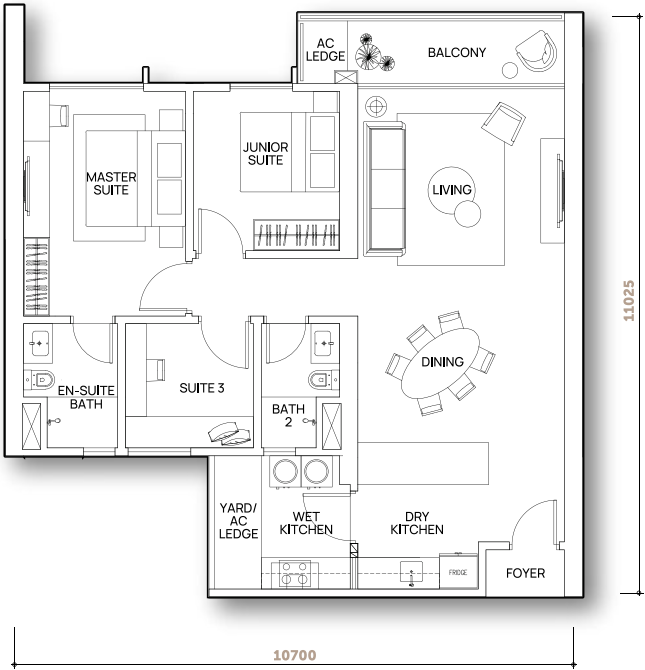
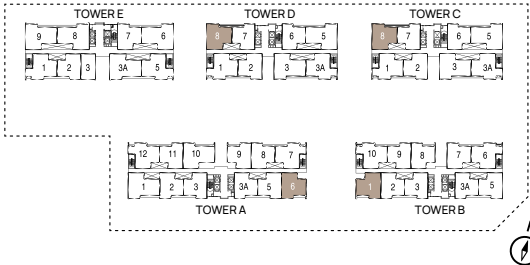


Type B

户型 B

1,070 sq. ft.
3 Bedrooms

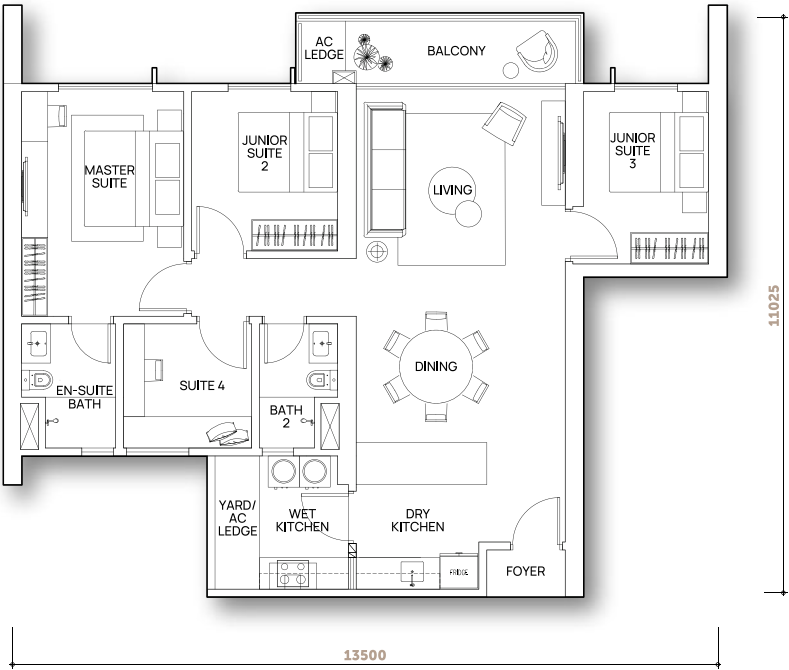
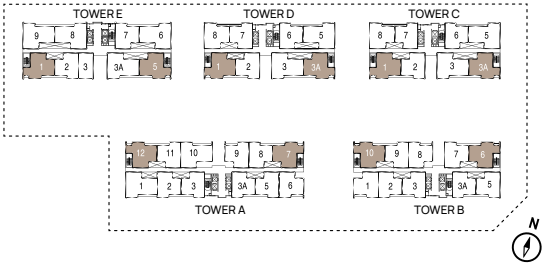
1,070 平方尺
3 房



Type C
户型 C

1,180 sq. ft.
4 Bedrooms

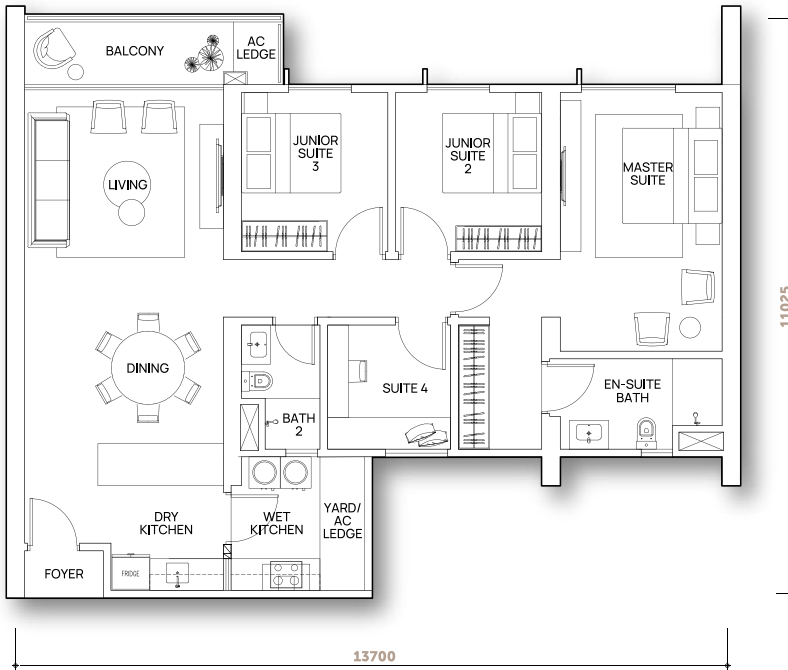
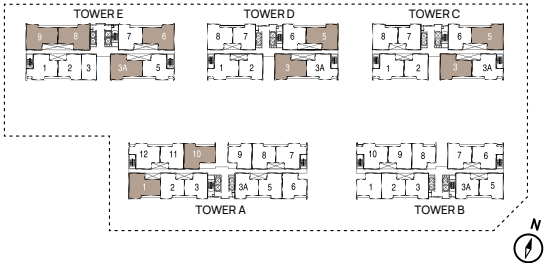
1,180 平方尺
4 房



Type D
户型 D

1,290 sq. ft.
4 Bedrooms

1,290 平方尺
4 房



Type F

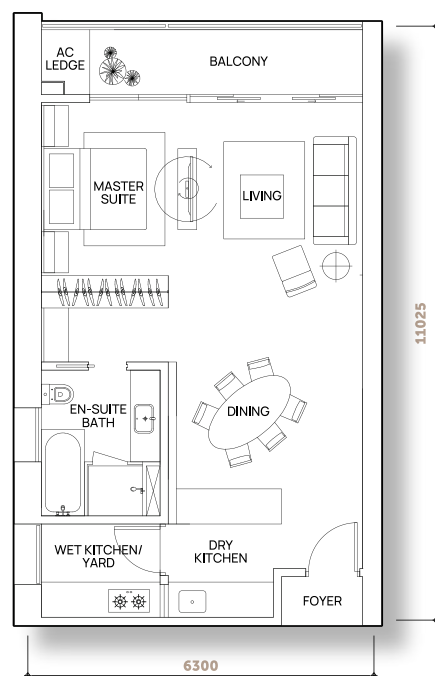
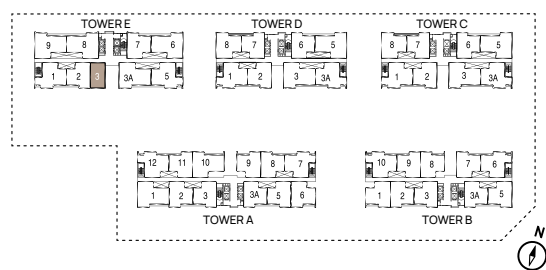
户型 F

740 sq. ft.

Studio

740 平方尺

1房



What more can we say, except
“don’t settle for less” than what
you and your family deserve.

别将就，您与您的家人值得拥有最完美的生活！

MORE
Wholesome
Conveniences
更舒适及捷便

We're mindful of even the smallest details to make a big impact on your comfort.

Big or small, we are piling on the conveniences to make your life at Vertu Resort a breeze. You will be surprised to find thoughtful and functional features you may not have expected, but being added simply because we care for your everyday convenience.

我们细腻入微只为给予您最舒适的生活

为了让您在 Vertu Resort 度假式公寓的生活安闲自得, 我们增添更多可以为您的生活带来便利的设施。这些为您而设的设施功能将令您又惊又喜, 面面周到之余, 还有我们对您日常生活的无限关怀。



We 'wheel' make life easier and hassle-free for you.

我们让您的生活悠闲轻松



Designated Trolley Lanes & Trolley Parking at Every Car Park Floor

You don't have to do a balancing act anymore! With bags of groceries, kids and other what-nots and only with two hands. Trolleys are available and can be kept where it's most convenient to you - at every car park level.

停车场楼层设有指定的货物手推车专属车道和手推车停放处

您无需再为过多的手中物及无暇兼顾孩子而感到懊恼，因为我们在每一楼层都准备了货物手推车供您使用，并设有专用的货物手推车车道助您轻松运送手中物。



Pick-Up & Drop-Off Buggy Service at Guard House and Lift Lobby

Tired from a day or night out? Just call for the Buggy Service that will give you and your family a comfy ride home.

警卫亭和电梯大厅设有迎宾服务

全天候的迎宾服务让您轻松自由出入。



Designated Drop-Off Points for Visitors

To ensure residents' privacy and for the convenience of visitors, specific areas are reserved as drop-off points.

设有指定落客区

为确保居民隐私和访客便利，公寓内设有指定落客区以方便访客出入。



Making more room for you to live and host with freedom.

无限自由的生活空间



Guest Houses for Rental

Extended family and friends can now come over for staycations with you and your family with the availability of guest houses right here in Vertu Resort.

公共房屋管理租赁

公寓内配有公共房屋供您租赁, 让您可在同一屋檐下轻松接待访客及临近您的居所。



WiFi at Common Areas

It's free and it's available at common areas! So that you can be virtually connected whenever you're on the go.

无线网络的公共区域

在公寓的公共区域无时无刻连接无线网络。



Tuning up benefits and spinning extras just for you.

只属为您而设的无限便利



Smart Parcel Locker

Now you don't ever have to miss a delivery or do tedious self-collects when goods and parcels can be dropped off even when you are not at home.

包裹储物柜

包裹储物柜的设置让您可即时接收包裹的递送。



Launderette

Laundry is no longer a chore when it's just a lift ride down, to be done at any time that is convenient for you.

自助洗衣间

当您可以随时享用自助洗衣服务时, 洗衣不再是一件繁琐事。



Music Room with Comprehensive Musical Instruments

Don't let the lack of space in your home stop you or your children from playing musical instruments of your/their choice in our well-equipped and sound-proof Music Room.

配备综合乐器的音乐室

无须忧虑家中空间的不足, 在公寓内您可享受配备齐全的乐器和隔音完善的音乐室, 专心培养孩子的音乐天赋。



DIY Tools Room

Space that supplies necessary tools you will need to make it possible in making or breaking whatever that you want to do on your own.

DIY工具室

当您想手工制作任何东西时候, 这里将为您提供您需要的工具。

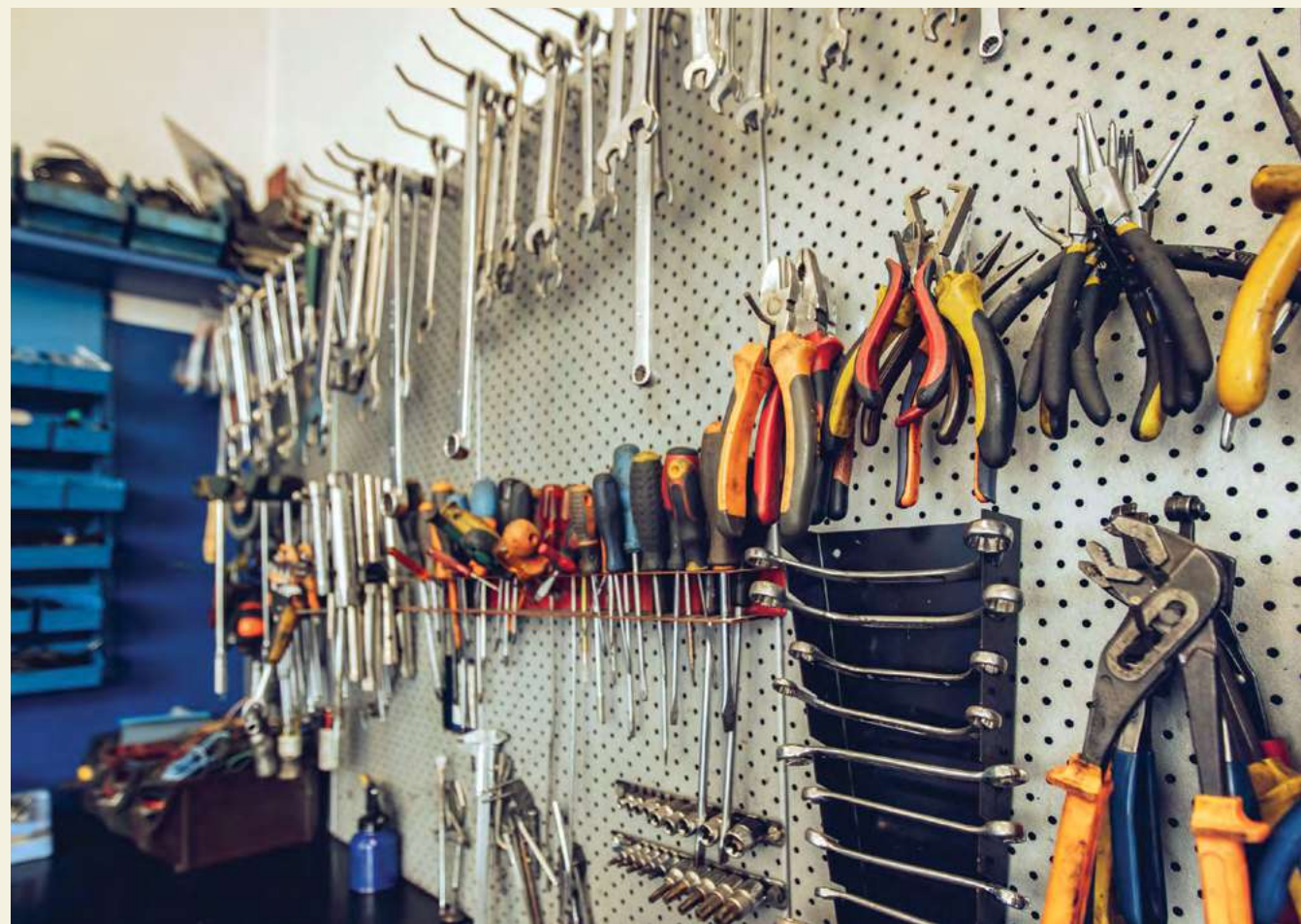


Convenience Store & Vending Machines

To fulfil sudden cravings that unexpectedly strike or to shop for odds and ends, there's always the Convenience Store and Vending Machines.

便利商店和自动售货机

无时无刻满足您突如其来的购物渴望。





Automated Car Wash

The simple act of automated car washing brings benefits to your car and the environment such as saving water, reducing ground water pollution and preserving your car's paint and finish.

自动洗车服务

自动洗车服务能更有效的节省水源，减少地下水污染及保留汽车的面漆，同时也方便您清洗汽车。

MORE

Leisurely Lifestyles
更悠闲的生活方式



Good times are aplenty when you have these many facilities for your indulgence.

We have gone above and beyond the ordinary to bring you facilities and activities to fit today's lifestyles and trends of the future. You will find yourself making plenty of excuses to either stay home and indulge yourself or play the perfect host to your family and friends.

一系列时尚及完善的生活设施供您尽享美好时光
我们跨越寻常，确保所为您提供各种设施和活动，都
足以迎合当下时尚的生活方式和未来的生活趋势。不论
尽情沉淀于自家中，或于公寓里招待友人，您都可以足
不出户。

Cheers to cooking, playing and chilling to your heart's content.

满足您对烹饪及玩乐的渴望



Social Kitchen for Private Hosting of Dinners, Parties or Celebrations

Flex your cooking skills without messing up your own kitchen by hosting friends and family at our Social Kitchen that is fitted for an awesome culinary adventure.

社交厨房供您主办私人晚宴、派对或庆祝活动

社交厨房让您随心所欲大展厨艺之余又不必担心搞砸自家厨房，同时也让您尽情款待您的亲朋好友，欢享一场美食之旅。



Rooftop Social Lounge

The coolest space to gather with family for cosy hangouts or just to chill with your buddies with a drink or two or many more.

顶楼社交休闲大厅

顶楼社交休闲大厅堪称是公寓内最酷且惬意悠闲的空间，适于与家人聚会或与友人小酌几杯。



Live your best life doing what you love, above all else.

尽情享受您最美好的生活



Urban Gardening

Put your green fingers to good use by growing and nurturing plants with other like-minded gardening enthusiasts.

空中绿色园艺

楼顶园艺区让您随意地与志趣相投的园艺爱好者一起种植和培育各式植物，从而绿化大家的家园。



Spa with Jacuzzi and Massage Room

Dedicated to relax and rejuvenate your body, mind and senses, here you can take all the 'me' time you need.

水疗按摩室

专属您的个人时段，全心放松和调节您的身心感官状态。



MORE

Advanced
Security Systems
更顶级的保安系统



We go to great lengths so that you and your family can have greater peace of mind.

Taking every precaution to ensure our family's safety is a responsibility we all take seriously. At Vertu Resort, we are equally committed to this cause, and we have put in place sophisticated security systems and other features to give you added assurance.

我们竭尽全力只为让您和家人安枕无忧

我们采取一切预防措施，建立了完善的保全系统和其他附加功能，确保为您和家人提供更多的安全保障。

**We want you to be safe,
smart and savvy as well.**

我们希望您不仅住得安心, 更可以时刻放心



License Plate Recognition (LPR) Vehicle Access

LPR is a truly hands free vehicle entry system. No more searching for physical card and flashing it at the entrance.

车牌识别系统(LPR)

车牌识别系统(LPR)让您无需在公寓入口处搜索门禁卡。



NFC Bracelets for Children

This is a practical and functional way to allow kids to enjoy the facilities and play without worry. It provides extra protection should your child wander off, as the information stored in the bracelet allows easy identification.

儿童NFC安全手镯

绝佳实用的方案让孩童可以尽情享受公寓里的设施, 同时亦能协助家长轻松掌握孩子的去向, 尽管孩子们走失, 手镯中存储的进出记录能够让您轻松识别孩子的踪迹。



Buggy Safety Patrol

Throughout the day and night, the Buggy Safety Patrol will roam the premises at random intervals for added security and safety.

保安巡逻车

公寓范围日夜都会有保安巡逻, 以确保全天候里外都安全。



Clearing the way for smooth navigation and easy access.

轻松简易的导航体验



Clear Signages & Brightly-Lit Car Park & Common Areas

Easy to read and understand signages are strategically positioned around the common areas, while the car parks are well-illuminated for smooth navigation.

清晰的标示牌, 明亮的停车场和公共区域

简易明确的标示牌, 加上灯光明亮的停车场, 让您的旅程无比顺畅。



Pedestrian Zones & Bicycle Lanes

To encourage an active lifestyle, multiple pedestrian zones for safe walkability and bicycle lanes are incorporated into Vertu Resort.

行人专用区和自行车道

为了鼓励健康绿化的生活方式, Vertu Resort 度假式公寓周围添加了多个安全的行人专用区和自行车道。



Protection begins with preventative measures.

保卫始于预防措施



Panic Button at the Car Park

The installation of panic buttons is an added safety measure to protect residents and initiate quick response from security personnel.

紧急按钮设于停车场

紧急按钮的安装属额外的安全措施，旨在保护居民，启动安全人员的迅速回应。



Mirrors at Blind Spots

You won't be blindsided that's for sure, as we have positioned mirrors at strategic spots for your safety.

盲点镜

盲点镜将精准地设置于战略位置，以确保您的安全。



Speed Breakers at Driveway

Another practical solution to slow down vehicles, prevent speeding and improve safety on the driveway.

车道设置减速带

实用且有效减低车速，防止车辆超速，进而提高车道的安全性。



Enriching your lifestyle with the intelligence of technology.

借助科技智能丰富您的生活



eConcierge Platform

Now you have the convenience of registering visitors, contractors and booking the facilities in Vertu Resort at your fingertips anywhere anytime.

网络礼宾服务平台

您可以随时随地轻松地为访客及承包商进行注册和预订 Vertu Resort 的公寓设施。



Virtual Intercom

Imagine having an intercom that follows you wherever you go, thus freeing you from the worries of hardware failure. That's convenience for you!

无线对讲系统

随身对讲机让您再无需忧虑硬件故障所带来的不便，时刻都可以保持联系。



MORE

Status and Prestige
更绿意的声望和地位

Walk the Green Talk by Living in a GBI Silver Certified Residence.

We have just made it easier for you to live a greener lifestyle by embedding sustainable features into Vertu Resort. The systems we have implemented not only promote wellness and instil eco-consciousness, they also reduce our ecological footprint as a community.

拥有GBI银牌认证的绿色生活

我们将一系列可持续性的元素注入Vertu Resort度假式公寓，让您享有绿色环保和健康的生活方式。可持续性的系统不仅可提升健康及灌输生态意识，亦能减少社区的生态足迹。

You are precious to us,
and so is the water we use.

我们视水源与您同等尊贵



Rainwater Harvesting for Entire Development

We take advantage of nature's free resource of rainfall by collecting, filtering, storing, and recycling it for various usage.

全面开发雨水积蓄系统

我们利用大自然的雨水资源，以收集、过滤、存储并且重新循环，以供居民使用。



Herb Pocket Gardens

Delightful pocket gardens filled with aromatic herbs will be planted to enliven the environment.

药草园

药草园种满各式芳香草药，让居住环境绿意盎然。

We adopt the 'waste not, want not' way of living the good life.

我们注重环保意识的绝佳生活



Automated Centralised Waste Collection System

Designed and engineered to dispose of waste quickly and easily, it also removes fine particles and odour before they are emitted to the environment.

通过完整的自动集中抽吸系统回收废物
排污系统经过精心设计, 快速处理废物及排除异味。



Recycling Bins (e-Waste, Paper, Glass & Plastic)

To empower and make it easy for everyone to recycle responsibly, Vertu Resort will have recycling room at ground floor.

环保回收箱

公寓底层将设有电子废物、纸张、玻璃和塑料分类的环保回收箱, 促使大家一同负责任的实践环保举动。



Low Volatile Organic Compound (VOC) Paint & Coating for Interior Walls & Ceilings

Painted with your wellness in mind, the benefits include easy breathing, bacteria resistance and heat reduction among others.

室内墙壁和天花板采用低VOC漆料

我们以您的健康为前提, 屋内都所采用低VOC漆料, 可有效地助于防霉, 隔热及让您家居的空气更清新。



Our care extends to your cars and the environment.

我们也关心您的汽车和其周边环境

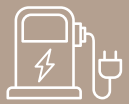


Sensor-triggered Lighting at Car Park

By detecting people and vehicle presence to provide lighting as needed, the system optimises visibility, saves energy and reduces costs.

灯光感应器设于停车场, 停车场大厅

灯光感应器通过检测人与车辆的存在提供照明, 不仅节省能源更能大大降低电费。



EV Charger at Car Park Lots

Now you don't have to drive far and wide to find a charging station, when we have conveniently installed an EV Charger right in the premises.

电动车充电器设于泊车位

当您的公寓停车场已安装了EV充电器供您随时使用, 您无需到处寻找EV充电站。



Smoke-Free Common Areas

To sustain the well-being of the residents and wellness of the environment at Vertu Resort, all common areas are zoned as 'smoke-free' with designated enclosed smoking rooms.

公共禁烟区

专属的室内抽烟室让 Vertu Resort 拥有公共禁烟区, 让居民拥有更健康的生活环境。



**It makes sense to save every cent,
wherever we can.**

我们尽所能为您节省更多



Controlled Indoor Temperature of 24 Degrees

By controlling indoor temperature at a consistent level, you will be able to save energy and limit excessive use.

保持室内温度于24°度

持续保持室温有助于节省能源并有效的限制过量的能源使用。



External Shading Device - Glazing of 50% to Facade

With the installation of these devices, we are able to significantly halve incoming heat into your homes.

额外50%釉面大楼遮阳装置

此防晒装置有助于降低您家园的室温从而达到节能的效果。



Energy-Saving LED Lighting

Also known as sustainable lighting, LED lights enable you to save energy compared to traditional lighting solutions.

节能LED灯光装置

LED灯光亦称为可持续性能源, 相效于传统灯光装置, 节能LED灯光能有效的节省能源用量。



ASPEN HEAD OFFICE

Aspen House, 300, Jalan Macalister,
10450 George Town, Penang.
T +604 227 5000 **F** +604 227 5005

ASPEN VISION CITY SALES GALLERY

Lebuhraya Bandar Cassia,
14110 Batu Kawan, Penang.
T +604 505 0505 **F** +604 505 0506

*T&Cs APPLY

VERTU RESORT - Pemaju: Aspen Vision City Sdn. Bhd. (1103837-X) | No. Lesen Pemaju: 14588/02-2028/0224(R) - Tempoh Sah: 5 Tahun (Dari 22/02/2023 hingga 21/02/2028) | Jenis Pegangan: Kekal
| Sijil Perakuan Siap dan Pematuhan telah diperolehi

IKLAN INI TELAH DILULUSKAN OLEH JABATAN PERUMAHAN NEGARA

DISCLAIMER /// This document is produced or published for general information purposes only and does not form part of any contract or otherwise. All photographs, illustrations and renderings are artist's impressions only. The information contained herein is not guaranteed to be correct or accurate at the time of printing/publishing and are subject to change without notice. The developer reserves the right to modify any part of the building/development components and design at any time at its absolute discretion. In the event of any discrepancy, all Floor Plans, Building Plans, Site Plans and any other plans ("Plans") herein shall be superseded by the Plans annexed in the Sale And Purchase Agreement. No oral representations (if any) by the authorized sales agents or the developer's employees shall be relied upon as correctly stating the representations of the developer.

VERTURESORT.COM | ASPENVISIONCITY.COM.MY | 1300 30 5000

ASPEN.COM.MY | ASPEN.SG

